

CLASS

EXPECTATIONS

COMMUNICATION



COMMUNICATE

There are many ways to get in touch with me-- google classroom, class dojo, and email.

I also have office hours from 2:00 PM - 3:20 PM to assist you in completing work and assignments.

Please do not hesitate to reach out if you are confused, having a problem, or something is going on privately that is affecting you at school.

GIVE YOUR BEST EFFORT

WORLD'S
-BEST-
TRY-ER



When you are in class- participate!

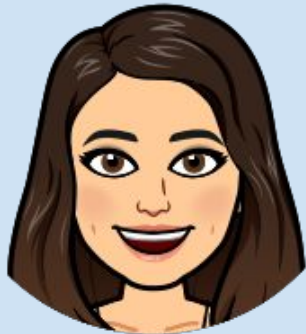
When you aren't in class and need me, come to office hours, message me on dojo, or leave me questions in the comments sections of assignments.

Even if you don't know what to do, try anyways!

If you don't attempt, then I can only assume you are choosing not to do it.

ATTENDANCE

BE ON
TIME



Always come to class!

Don't be late!

If you are having internet connection issues or you need a chromebook at home for yourself- let me know! The school will provide that for you.



PARTICIPATE

BE ON
TIME



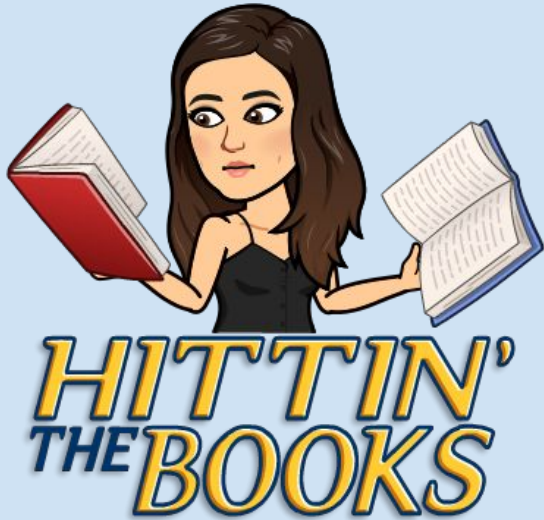
Make sure your camera is on

When the teacher asks a question, you are responding in the chat or out loud

You are responding and adding onto what your fellow classmates are saying during our class discussions.



Homework



NO LATE or INCOMPLETE HW IS
ACCEPTED.

NO EXCUSES.

If you have specific circumstances that
prevented you from completing work you
MUST communicate them to me in a
timely manner.

RESPECT



Be respectful of yourselves, your peers & your teachers.

In this class, we are a family and we should treat each other like one.

Remember- every meet is recorded and everything you type is permanent. Think twice before you send a message or submit an assignment.

HAVE FUN!

HAVE FUN

In this class you will go on adventures, discover new things, and explore your passions.

ELA is so much more than writing and reading- it is a part of everything you do!

